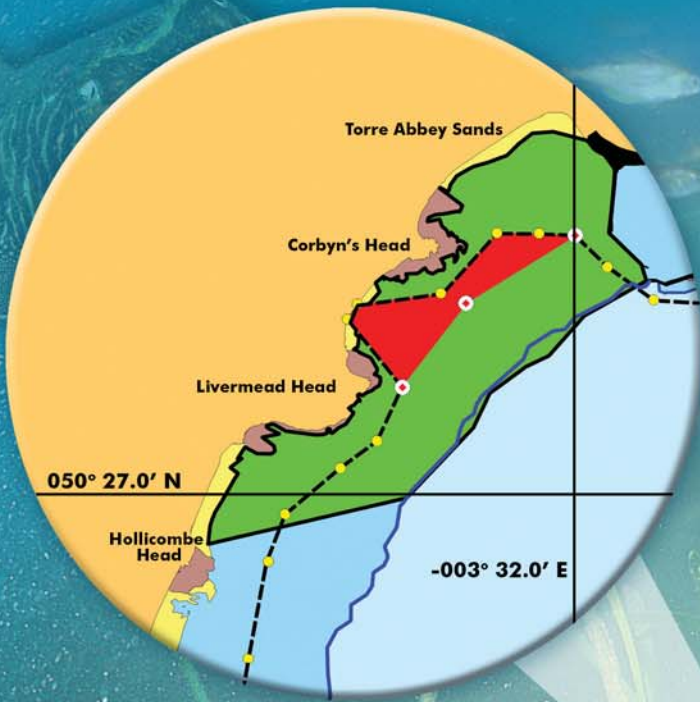
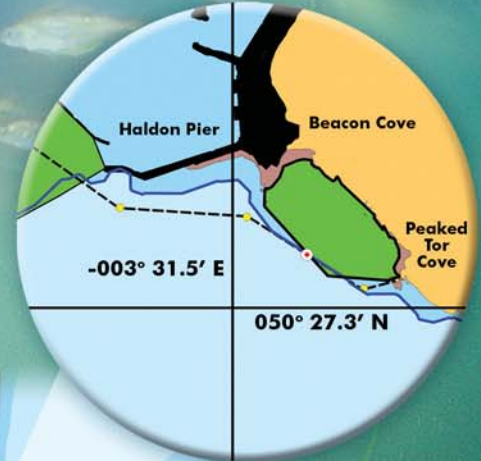


Locations of Torbay's Seagrass Beds



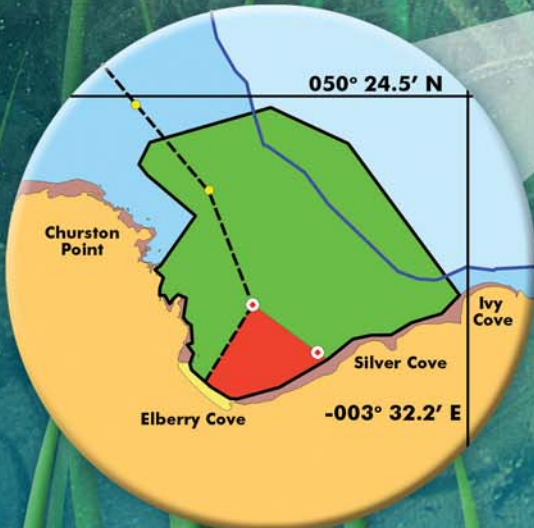
Torre Abbey Sands to Livermead Head



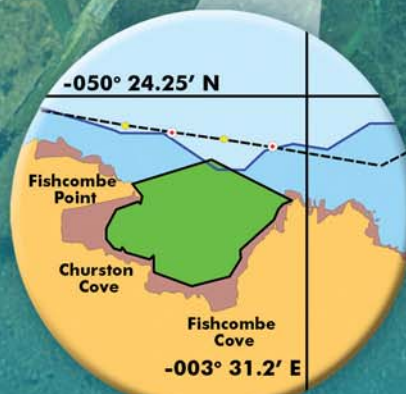
Millstones Bay



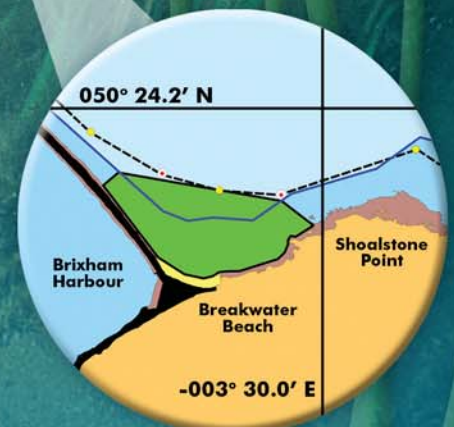
Seagrass marker buoy



Elberry Cove



Fishcombe Cove



Breakwater Beach, Brixham



TORBAY
COAST AND
COUNTRYSIDE
TRUST

Torbay's Seagrass Beds

A hidden world

Torbay has over 80 hectares of seagrass beds - this represents 30% of all of Devon's seagrass beds

The seagrass beds are home to hundreds of animals and plants - many commercially valuable fish species breed in the seagrass beds and this abundance of life provides a valuable food source for larger fish and diving birds. **Torbay's seagrass provides a home for both rare species of Seahorse and it is now an offence under the Wildlife and Countryside Act to damage or destroy their place of shelter or disturb whilst occupying their place of shelter.**

Seagrass helps Torbay's environment - it improves water quality by filtering out pollutants, producing oxygen and absorbing carbon dioxide

Seagrass roots stabilises sediments - making the water clearer and protecting the shore from coastal erosion

SEAGRASS BEDS ARE EASILY DAMAGED SO PLEASE

DON'T

Anchor over the seagrass beds

as anchors pull up roots, allowing storms and currents to wash away large areas

Travel at high speed over shallow seagrass areas at low tide

as boat propellers, keels and jet ski jets can cut through the leaves and roots, scarring and killing the seagrass

Discharge waste or rubbish into the sea

as this kills it, directly or cuts out light and allows algae to smother the seagrass

Use scallop dredges or other mobile fishing gear in seagrass areas

as these cut through the leaves and roots breaking up the seagrass beds

Use gill nets in the seagrass areas

as footropes, weights and anchors can damage the seagrass

Walk on the seagrass or dig for bait in it

DO

Anchor away from seagrass

Watch out for seagrass and observe Torbay Harbour speed restrictions

Use proper disposal sites

Observe voluntary 'no scalloping' areas and keep mobile gear out of the seagrass

Set nets outside the seagrass areas, this also avoids areas with over-wintering diving birds

Walk or dig outside the seagrass areas

TORBAY'S LARGEST SEAGRASS BEDS ARE SHOWN ON THE MAP OVER THE PAGE

For further information please contact Torbay Coast and Countryside Trust on 01803 528841 or info@countryside-trust.org.uk www.countryside-trust.org.uk